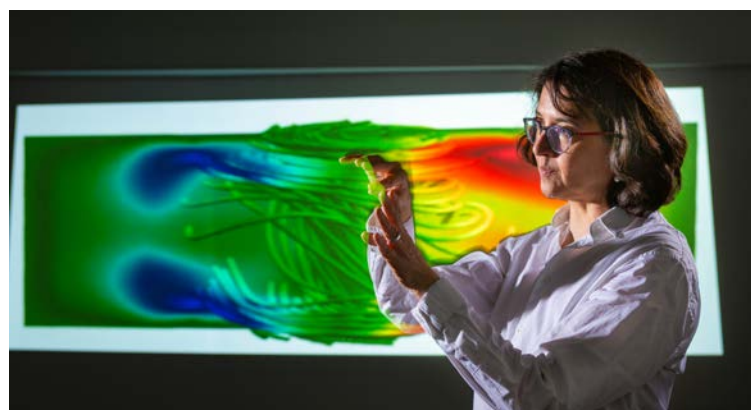
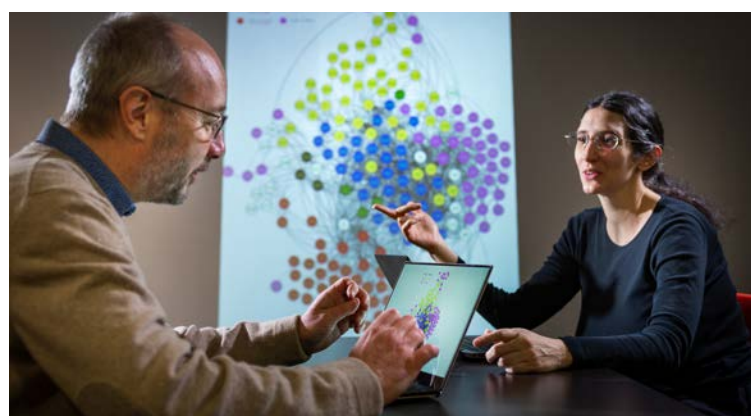
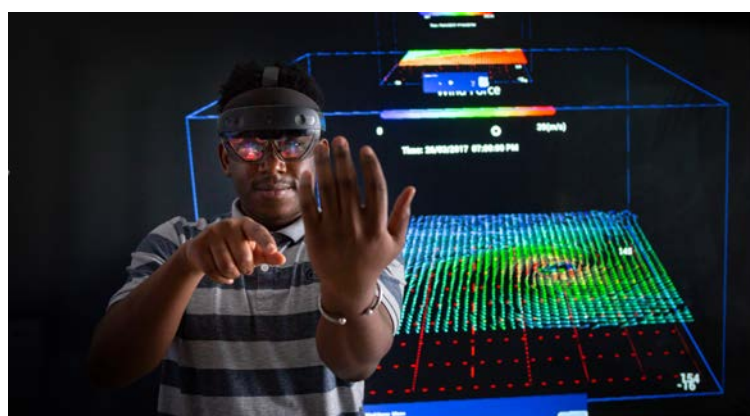


LISN

LABORATOIRE INTERDISCIPLINAIRE
DES SCIENCES DU NUMÉRIQUE

Welcome



Summer 2023

Photo credits : CNRS - Christian Morel



SERVICES AT YOUR SERVICE

The LISN common services staff are present on each site to facilitate your work.

The intranet is at your service 24/24

www.intranet.lisn.upsaclay.fr

IT

The IT, **SAMI** for Service d'Administration des Moyens Informatiques, is at your disposal to facilitate your technical installation.

The team has set up a practical internal wiki, which can be found on the intranet, under the heading "Informatique" and on

<https://docsami.lisn.upsaclay.fr>

sami@lisn.upsaclay.fr

For software development and scientific computing, contact the **ASARD** team.

asard@lisn.upsaclay.fr

Logos, templates, publications

On the intranet, everything you need for your communications: signature rules, presentation templates, posters, logos, etc.

communication@lisn.upsaclay.fr

Prototypes and creations

Design and build your own parts in the **FABLAB**, located in building 660.

fablab@universite-paris-saclay.fr

A need for more complex design and machining?

ctemo@lisn.fr

Infrastructure, acces, furnitures

The SPIL service is at your disposal for all material aspects at LISN.

spil@lisn.upsaclay.fr

Make purchases, go on a mission

There are many rules when it comes to using public money. The intranet will tell you who to contact at the "Pole Gestion" (financial team), all the procedures for requesting a mission order, which receipts to keep, how to be reimbursed, how to use the lab's bank card, etc.

gestion@lisn.upsaclay.fr

HR: vacations, recrutements ...

The intranet gathers all the procedures and documents of the Human Resources

Department concerning leave, training, recruitment, reception and contact information.

accueil@lisn.upsaclay.fr

LISN'S LOW-CARBON STRATEGY

Taking action together

LISN has adopted a series of measures to reduce its greenhouse gas emissions by 50% by 2030.

Sobriety is the order of the day: do your part!

SECURITY

Be vigilant about computer security

Don't disclose data unnecessarily, make sure you use academic applications for collaborative work, your emails etc., declare all visits, lock your computer, don't travel with your data, check doors and windows when leaving, even from shared premises, in a word, be vigilant!

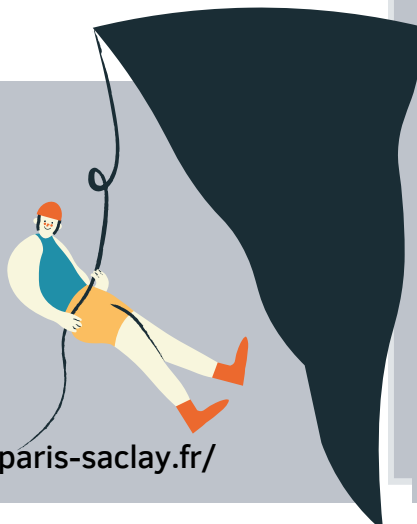
Health, dangers

Emergency numbers are posted in each office, the intranet is also a source of information on the location of first aid boxes, people to contact etc.

Suffering at work, harassment? You'll find contacts and leads on the intranet, whatever your employer.

SPORTS

The range of sports and sports facilities on campus is extensive: dance halls, weight rooms, climbing walls, swimming pool, etc. You are sure to find an activity that suits you.



<https://sports.universite-paris-saclay.fr/>

THE RESEARCH AT LISN

The research is structured in 17 teams, 5 departments, 5 transversal actions

AAC

Algorithms, Learning and Computation

Computing, from theory to applications: discrete and continuous models; design, implementation, and evaluation of methods and algorithms; parallel, distributed and quantum algorithms; performance, frugality, explainability
GALAC, ParSys, A&O teams

IaH

Interactions with Humans

Human-machine interaction with a multidisciplinary approach combining computer science, signal processing and human sciences
AMI, AVIZ, CPU, EX-SITU, ILDA, VENISE teams

M-E

Mechanics- Energetics

Fluid mechanics, mass and heat transfer, deterministic and stochastic modeling, machine learning, hybrid models, instabilities, turbulence and control, transfers, energy conversion.
COMET et DATAFLOT teams

SDD

Data Science

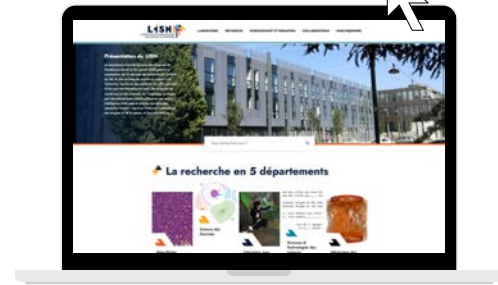
Modeling and analysis of data and knowledge, consideration of data characteristics, scaling, resistance to bias.
Equipes BIOINFO, LaHDAK, ROCS, A&O

STL

Sciences et Technologies des Langues

Automatic language processing, signal processing, machine learning, corpus linguistics, knowledge representation, learning for automatic language processing.
Equipes LIPS, M3, SEME

More details on LISN website
www.lisn.upsaclay.fr



LISN in figures

139 permanent scientists,
18 post-docs,
147 doctoral students,
17 research teams,
5 departments,
5 transversal actions,

and 56 permanent and non-permanent engineers and technicians in the research support services.



LISN is member of the STIC, SMEMaG and SMAER Doctoral schools (Sorbonne University) and participates in the following Graduate schools Computer Science and Digital Sciences (ISN) - Engineering and Systems Sciences (SIS) - Sport, Movement and Human Factors (SMFH).

LISN is also very active within the DataIA Institute and contributes to several of the University's Interdisciplinary Objects.

Transversal actions

- * Deep Learning for Physics and Physics for deep Learning
- * Arts and Science
- * Responsible Research
- * Visualization and exploration of large data sets
- * SHS and Digital Sciences

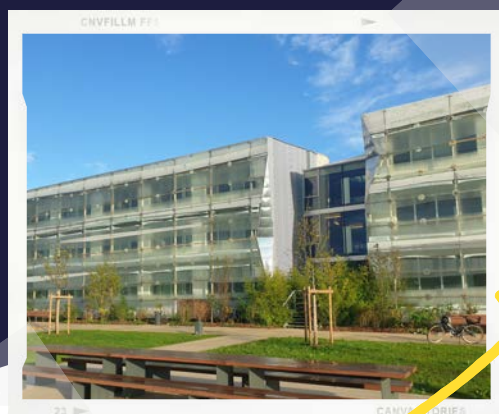


@lisnlab



@lisnlab

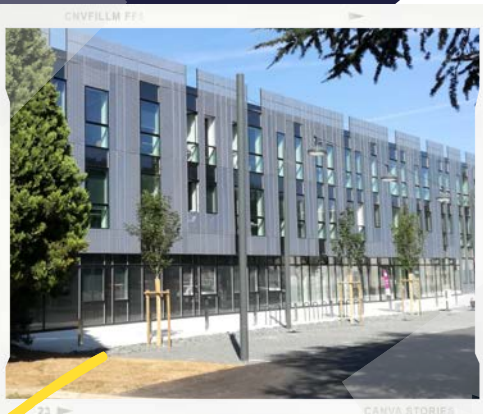
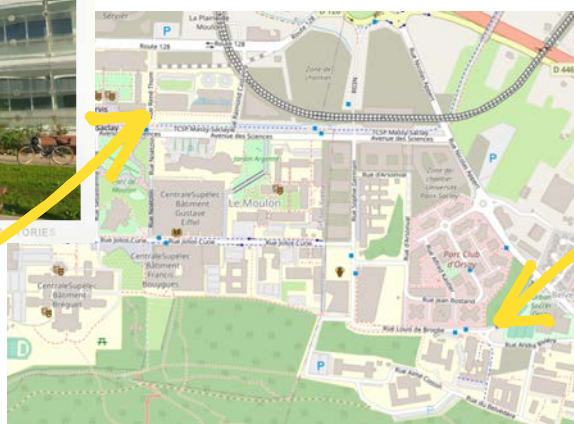
A bi-located laboratory



Plaine site

Bât 650

1 Rue Raimond Castaing
91190 Gif-sur-Yvette



Belvédère site

Rue du Belvédère

Campus Universitaire Bâtiment 507
91405 Orsay

Bât Digitéo 660

4 rue René Thom
91190 Gif-sur-Yvette

The intranet is at your service 24/24

www.intranet.lisn.upsaclay.fr

The meeting rooms, on the ground floor
of each building, can be booked
on the intranet
<https://intranet.lisn.upsaclay.fr/>

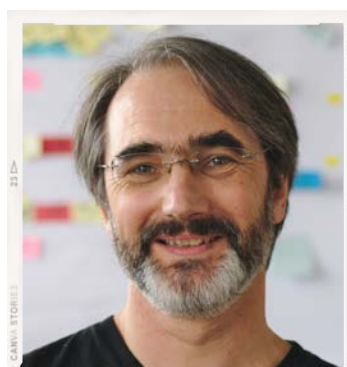
Labs' direction team



Sophie ROSSET
Director



Didier LUCOR
Deputy Director



Michel BEAUDOUIN-LAFON
Deputy Director



Caroline MARTIN
Administrative manager

Contact of the lab's direction : direction@lisn.upsaclay.fr
Assistant: Bénédicte Daly - benedicte.daly@lisn.upsaclay.fr

Advisory boards

- Laboratory Council
- Directoire
- Scientific Orientation Council

Roles and compositions on the Intranet

Internal regulations

Text specifying the rules and regulations that are applicable to LISN.

Full text available for download on the Intranet

Charter for Living Well Together

The charter for living together sets out a common base to be respected, particularly in the fight against harassment

Full text on the Intranet